

# Leica Roteo 35

The all-in-one rotating laser



**SITE PROOF**  
by Leica Geosystems

- when it has to be **right**

**Leica**  
Geosystems

# All-round perfection for interior works

On ceilings or walls, on floors or using a tripod, the Leica Roteo 35 rotating laser is a multi-talented performer. You can use it for many tasks in interior works where levelling or aligning is required.



## Strong performance on all levels

The impressive features of the Leica Roteo 35 include: The integrated motorised wall mount quickly adjusts the laser height to

precise accuracy with the remote control. Horizontal and vertical lines or an exact 90° angle – it is no problem for the

Leica Roteo 35. The rotating laser can automatically self-level for inclined set-ups of up to  $\pm 4.5^\circ$ .



Scanning modes enhance visibility in bright lighting conditions.

- when it has to be **right**

**Leica**  
Geosystems

# All-in-one

Extensive know-how in modern design

## 90° plumb beam

For alignment over a control point and creating 90° angles

## Simple to operate

Intuitive user interface through uniform colour coding (laser, remote control and receiver)

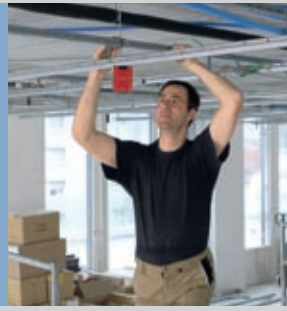
## Fully automatic horizontal and vertical laser

Manual levelling during set-up is not necessary



## Installing ceilings and walls

Using the motorised mount, the Leica Roteo 35 is easily moved up or down on the wall for ceiling grid installation. For walls, the same mount moves forwards and backwards when in the lay-down mode to precisely position the unit for dry wall track installation.



## Marking out right angles

The combination of a vertical 360° reference plane and plumb beam simplifies layout, allowing you to work more accurately and efficiently.



## Aligning partitions and windows

The Roteo 35 simplifies the task of aligning office partitions with a bright visible reference. The optional laser receiver is particularly useful for long distances and very bright lighting conditions.



## Stairs and roof pitches

You can position the laser manually or with the help of the motorised wall mount at any angle between 0° and 90°, allowing you to work without any problems on stairs and roof pitches.



## Outstanding battery life

For working without interruption (up to 160 hours with alkaline)

## Drop damage protection

A strong aluminium cage protects the laser head from damage

## Motorised wall mount

For millimetre-accurate setting of the working height

# Leica Roteo 35

The all-in-one rotating laser

## A complete package: Included items

Leica Roteo 35 WM Package  
Art.No. 762766

- ① Roteo 35 rotating laser
- ② Motorised wall mount
- ③ RC350 remote control incl. battery
- ④ Battery holder for alkaline batteries
- ⑤ International charger incl. rechargeable batteries
- ⑥ Target plate
- ⑦ Laser glasses



There are further packages available.  
Please contact your local Leica Geosystems distributor for more information.

## Recommended original accessories

**RRC 350 Laser receiver with clamp**  
Art.No. 762771  
To detect the reference laser beam.

**CLR290 Clamp Rod\***  
Art.No. 761762  
With mounting platform.

**LAT 195 Adjustable tripod**  
Art.No. 663099  
High-quality tripod with centre brace and crank.



\* Not available in the USA

# Leica Roteo 35

All-round precision



Technical data	Leica Roteo 35
Range	up to 300 m (1000 ft) dia. with laser receiver
Range remote	30 m
Self-levelling accuracy	20" or 3 mm at 30 m
Self-levelling range	$\pm 4.5^\circ$
Rotation speed	Variable (5 speeds)
Scanning angle	$2^\circ$ to $36^\circ$
Battery life	50 hours (rechargeable), up to 160 hours (alkaline batteries)
Battery types	D-cell (mono), 2 x 1.5 V or rechargeable battery pack
Protection class	IP 54, dust- and splash-proof

Laser class 3R in accordance with IEC 60825-1 and EN 60825-1



Register your product at [www.leica-geosystems.com/registration](http://www.leica-geosystems.com/registration) to extend the warranty.

Illustrations, descriptions and technical data may be subject to alteration; We reserve the right to make modifications. Printed in Switzerland. Copyright Leica Geosystems AG, Heerbrugg, Switzerland, 2008

Leica Geosystems construction products – perfect indoors and outdoors



- when it has to be **right**

**Leica**  
Geosystems



## Leica Roteo 35. For fully satisfied users

„For interior works, I require a versatile rotating laser. The Leica Roteo 35 is my perfect partner for laying floors, installing walls and ceilings, right up to fitting furniture.“

„The motorised wall mount is simply ingenious! It can be set at any height. Using the remote control, I can operate the Leica Roteo 35 perfectly, even from a distance.“

„If you work on building sites, you need robust instruments. Therefore the Leica Roteo 35 is exactly the right tool! Its compact housing is very durable. It is also simple to operate. Everything I expect from a construction laser.“

Your dealer

[www.leica-geosystems.com](http://www.leica-geosystems.com)

- when it has to be **right**

**Leica**  
Geosystems